

REGISTRATION FORM

Please complete one per person and submit no later than one week prior to the workshop.

NAME		
School District	Building Name	
Street Address (Home or School)		
City	State	Zip Code
Phone Number(s)		
Email Address (please print clearly)		

Please circle that which applies to you:		<i>*Note: if submitting more than one Registration Form from outside the R7 district, each additional registration after the first will cost only \$100. In such cases and as feasible, please submit all registrations together.</i>
LSR7 Parent (of a child with an ASD)	FREE	
LSR7 District Employee	FREE	
NON LSR7 Parent	\$150	
NON LSR7 Employee*	\$150	

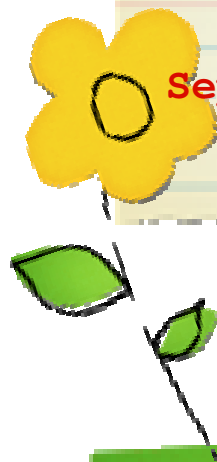
Method of Payment <small>(make payable to LSR7 Department of Special Education)</small>	Check or Purchase Order <small>(Insert check or PO # in space above)</small>	Total Enclosed:
--	---	-----------------

FAX or MAIL form with attention to Stacey Martin: 816.986.2327
501 SE Todd George Road, Lee's Summit, Missouri 64063

AUTISM SPECTRUM WORKSHOP SERIES

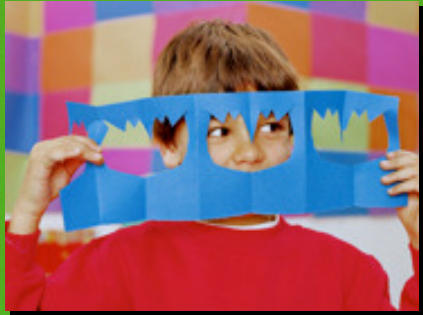
Working with Students With Autism Spectrum Disorders in the Educational Environment

Sept 22 & 23 AND Oct 27 & 28, 2011



Facilitated by LSR7 Autism & Behavior Specialists
Mary Beth Patry, M.S. Ed
Stacey Martin, M.A. Ed.
and Kaye Otten, Ph.D.





"The information and resources I acquired from the four-day workshop on autism were incredible!" - (Parent)

"Students on the autism spectrum constantly show us their strengths and skills. As an educator, this workshop has informed me how to work with each student's strengths, as well as families to develop individualized programs that address the student's needs and continually build upon strengths." - (Educator)

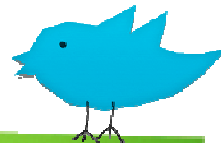


"The workshop not only provides valuable information, interventions, and strategies for students on the autism spectrum, but for us, as educators, it is eye opening to be reminded that all kids have learning curves, differences, and sensitivities that need to be addressed and recognized by us." (Educator)

The **Lee's Summit Autism Series** which began as a two-day workshop, originated as an introduction to autism to provide staff with information about how to best serve some of our children with special needs. Currently, the district proudly provides this four-day workshop twice annually as well as additional workshops specific to autism spectrum disorders, welcoming parents and staff members within and outside of the R-7 District.

The purpose of this series is to provide staff and parents with quality workshops on a variety of issues facing those working with children with autism spectrum disorders. Participants in these workshops will gain knowledge and skills critical to working with children on the spectrum in an educational setting. The information is presented by Behavior and Autism Specialists that presently

work within the Lee's Summit R-7 Schools. Each presenter has obtained master or doctoral level training in the field and is passionate about meeting the unique needs of students on the spectrum. With the presenters' unique backgrounds and experiences, attendees will be provided with various perspectives and in-depth, yet practical information.



For further information, contact Stacey Martin at 816.986.2301 or stacey.martin@leesummit.k12.mo.us

OVERVIEW

Working with Students with Autism Spectrum Disorders in the Educational Environment

September 22 & 23 AND October 27 & 28, 2011

This four-day workshop will provide an overview of Autism Spectrum Disorders (ASD). Also included will be strategies for working with the student with ASD in the educational setting. A variety of presenters will share valuable information and ideas with participants. Various effective methodologies will be discussed including encouraging social development, incorporating sensory strategies, utilizing various behavior intervention techniques, and creating and utilizing visual supports. Training will include hands-on activities, guest speakers to share personal experiences with ASD, and a parent panel.

WORKSHOP SCHEDULE

Registration the first day will be at 8:00a.m..

Each workshop day will begin promptly at 8:30a.m. and will end no later than 4:00p.m.

WORKSHOP LOCATION

Tony L. Stansberry Leadership Center
301 NE Tudor Road; Lee's Summit, MO 64086

CONFIRMATION

A confirmation letter will be mailed to you upon receipt of your registration.

