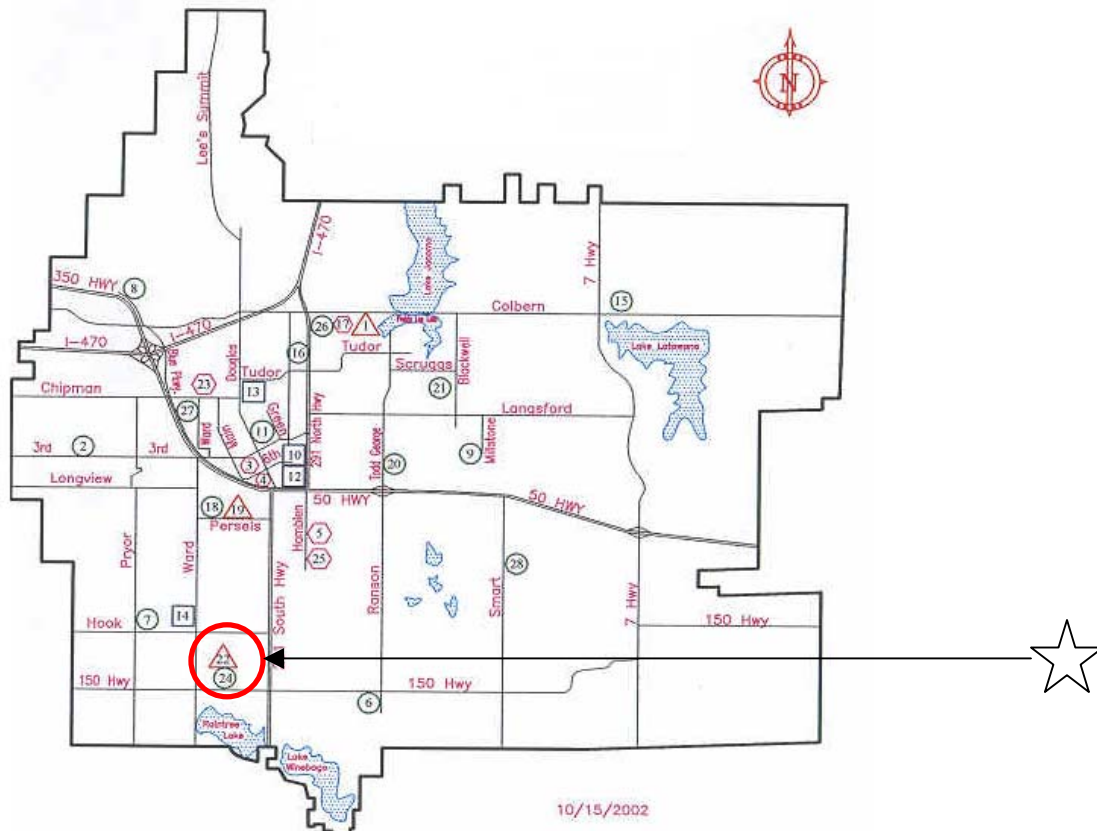


Summit Lakes Middle School
3500 SW Windemere Dr.
Lee's Summit, MO 64082



Directions to Summit Lakes Middle School:

From the north-east:

From the junction of I-70 and MO-291 S.
Go south on MO-291 S (7 miles) and merge onto I-470 S.
Take I-470 S (3 miles) to US-50 E via exit number 7A toward Lee's Summit/Sedalia.
Take US-50 E (2 miles) to the 3rd St. exit.
Turn right onto SW 3rd St.
Immediately get in far left lane. Turn left onto SW Ward Rd.
Take SW Ward Road (4 miles) to MO-150 Hwy. Turn left onto MO-150.
Take MO-150 Hwy. (1/2 mile) to SW Windemere. Turn left.
Summit Lakes will be straight ahead.

From the north-west:

Coming from I-470 E to US-50 E.
Merge onto US-50 E. and go 1.86 miles.
Take the 3rd St. exit. Turn right onto 3rd St. and go 0.06 miles.
Turn left onto SW Ward Rd. and go 4.01 miles.
Turn left onto MO-150 and go 0.61 miles.
Turn left onto SW Windemere Dr. and go 0.09 miles.

From the south:

Coming from MO-291 going north to MO-150.
Turn left onto MO-150 and go 0.81 miles.
Turn right onto SW Windemere Dr. and go 0.09 miles.

From the west:

Going east on MO-150 from the junction of MO-150 and US-71.
Go east on MO-150 and travel for 7.61 miles.
Turn left onto SW Windemere Dr. and go 0.09 miles.